



PRODUCT CATALOG

JIANGSU LIHE ELECTRICAL EQUIPMENT

SINGLE-PHASE POLE MOUNTED TRANSFORMER



JIANGSU LIHE ELECTRICAL EQUIPMENT CO., LTD

Smart Electric Global Service provider
Make life better!

www.jslhtf.com

CATALOGUE

■ Company Profile	01
■ Certificate	02
■ Product Overview	03
■ Product Feature	04
■ Conventional type	05
■ Complete Self Protect type	05
■ Technical parameters	06
■ Our factory	09
■ Case	10

© ABOUT LIHE ELECTRICAL EQUIPMENT

LIHE ELECTRICAL EQUIPMENT, is an electrical enterprise with transmission and distribution industry as its main business, integrating product research and development, manufacturing and trade. Designated suppliers for the world's top 500 enterprises. Its main products include power transformers, medium and low voltage switchgear, distribution panel, circuit breakers, transmission tower, Cable and other power distribution equipment. The group has five departments: Transformer department, Panel department, power transmission tower department, cable department and electrical engineering department. LIHE ELECTRICAL EQUIPMENT has been working hard to provide the best transmission, distribution solutions for users all over the world.

Power distribution solutions that drive the global energy transition

With energy demand expanding in both developed and emerging countries, the challenge for LIHE ELECTRICAL EQUIPMENT is to connect energy with people. The group's teams work as closely as possible with projects and decision makers and design and propose technical and process solutions based on global user needs.

Jiangsu Lihe Electrical Equipment Co., Ltd

Address: No. 22, Jinshajiang West Road, Economic Development Zone, Si Hong County, Suqian City, Jiangsu Province

Tel: +86-4000-222-091

Website: <https://www.jslhtf.com/>

Sales: info@jslhtf.com



QUALIFICATION CERTIFICATION



PRODUCT OVERVIEW

This pole-mounted transformer series operates either as a single unit for single-phase loads or in three-unit banks for three-phase systems. It accommodates direct mounting on wooden/concrete poles, with cluster configurations available for three-phase applications. Ideal for rural electrification, remote areas, and scattered villages, it delivers reliable power for residential lighting, agricultural activities, and small industrial facilities.

We offer two base models (Conventional and Complete Self-Protect types) with dual core material options (CRGO and amorphous metal). The amorphous core reduces no-load losses by 60-70% compared to conventional CRGO, making it particularly suitable for low-load-rate rural grid applications.

Executive Standards

IEEE Std C57.12.00TM-2000 standard – IEEE Standard for Standard General Requirements for Liquid-Immersed Distribution, Power, and Regulating Transformers.

IEEE Std C57.12.20TM-2005 standard – IEEE Standard for Overhead-Type Distribution Transformers, 500kVA and Smaller: High Voltage, 34500V and Below; Low Voltage, 7970/13800V and below.

IEEE Std C57.12.31TM-2010 standard – IEEE Standard for Pole Mounted Equipment – Enclosure Integrity

IEEE Std C57.12.35TM-1996 standard – IEEE Standard for Bar Coding for Distribution Transformers

IEEE Std C57.12.90TM-2006 standard – IEEE Standard Test Code for Liquid-Immersed Distribution, Power, and Regulating Transformers.

IEEE Std C57.12.91TM-2001 standard – IEEE Guide for Loading Mineral-Oil-Immersed Transformers.

IEEE Std C57.154TM-2012 standard (Pending Approval)– IEEE Standard for the Design, Testing and Application of Liquid-Immersed Distribution, Power and Regulated Transformers using High-Temperature Insulation Systems and Operating at Elevated Temperatures (ASTM) American Society for Testing Materials. NEMA TR 1-1993 (R2000) – Transformers, Regulators and Reactors, Table 0-2 Audible Sound Levels

10 CFR Part 431 – Department of Energy – Energy Conservation Program for Commercial Equipment: Distribution Transformers Energy Conservation Standards; Final Rule.

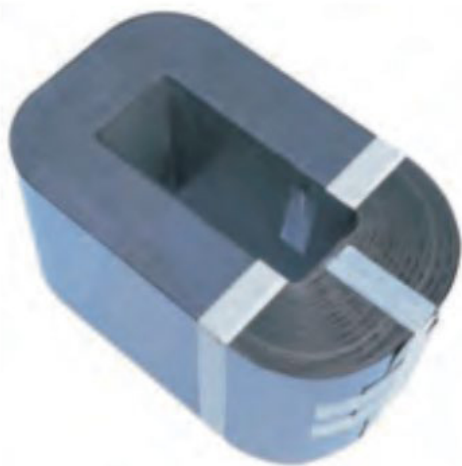


© PRODUCT FEATURE



Main advantages of single-phase pole mounted transformers made

- (1) Cover mounted high voltage porcelain bushings with eyebolt terminals are mounted on flat embossments on the cover and have undercut gasket seats for improved sealing. The eye bolt connectors are cast bronze plated with tin to accommodate both aluminum and copper conductors.
- (2) One-piece fasten ring prolongs the life of the transformer, facilitates inspection and maintains even pressure around the entire rim. It combines with a specially formed tank rim, drawn cover and gasket to form an effective seal which will not deteriorate with age.
- (3) Low voltage tank-wall bushing terminals are clamp type and tin plated.
- (4) Tank is equipped with self-sealing pressure release device.
- (5) Support lugs, welded to the tank, conform to ANSI standards are made of hot-rolled steel.
- (6) Tank is supplied with a tank grounding bolted ring-type connector suitable for use with copper or aluminum.



Amorphous Metal Core



C.R.G.O. Core

⌚ CONVENTIONAL TYPE



The transformer is cylinder sealing structure. Each one is fixed with grounding devices, hooks, supporting lugs which conforms to ANSI standard, and one or two high voltage bushing on the cover, low voltage bushing on the wall of the tank and eyebolt connecting terminals. The tap changer should be adjusted basing on the instruction after the power off.

⌚ COMPLETE SELF PROTECT TYPE

This type of transformers are CSP type, which can protect itself from thunder and lighting, short circuit and protect the transiting and distribution line from current failure because of self-malfunction.

Except from some similarities such as cylinder tank, hooks, lifting lugs, grounding devices, nameplates, core and winding with the conventional type. This type of transformers have characteristics and devices as follows:

One or two high voltage bushings are on the cover with fuse.

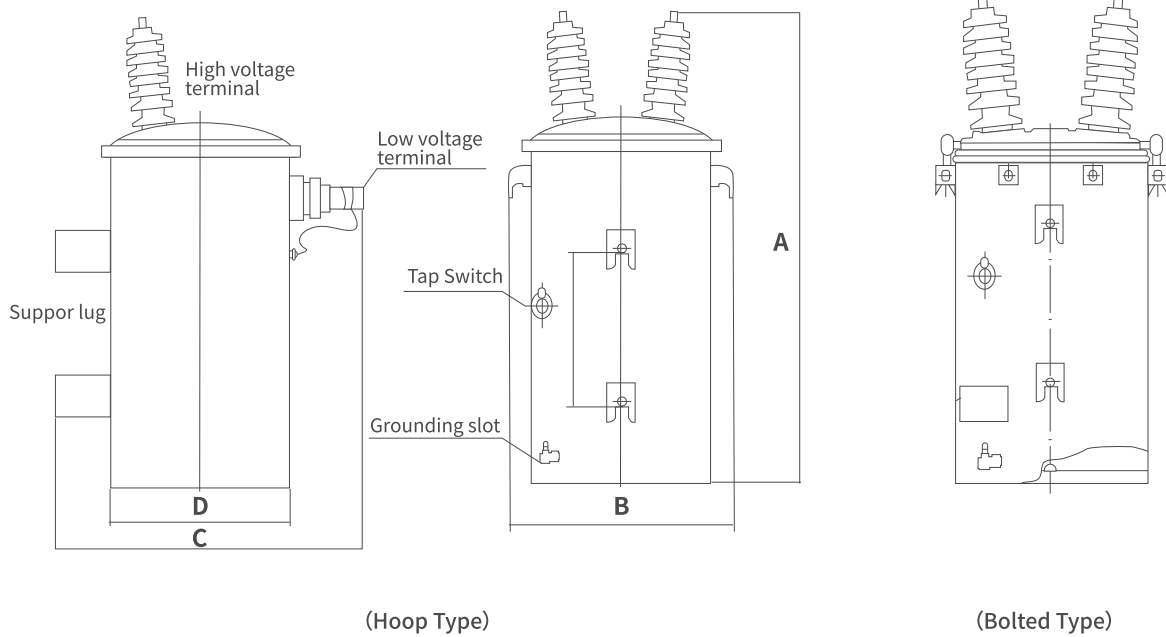
One or two arresters are installed on the wall of the tank, whose top end is near to the high voltage bushing, and connected to the bushing by a copper strip. One secondary breaker switch is above the winding inside the tank, and here are operating handle, overload reset and signal light,

Low voltage bushing is educed from the wall of the tank, grounding device is fixed to position X2. One end of the single bushing leads out through the high voltage bushing, the other end is ground connection.



TECHNICAL PARAMETERS

---3-75kva---

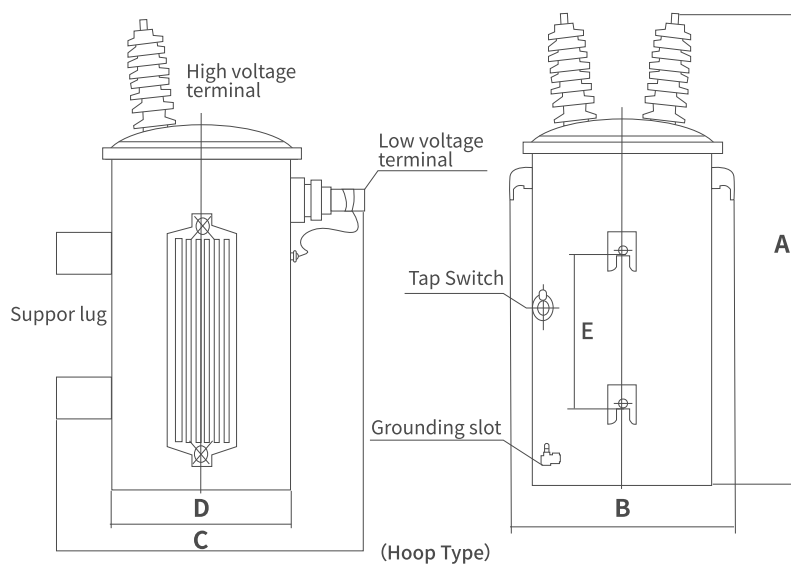


Technical Data for D11 Series Single-Phase Pole-Mounted Distribution Transformer(CRGO Core)

Rating (KVA)	H.V(V)	Tapping Range (%)	L.V(V)	Loss(W)		Dimension(mm)					Weight(kg)		
				No Load Loss	Full Load Loss	A	B	C	D	E	Oil Weight	Oil Content	Total Weight
3	33000/ 19000	±2×2.5% or others	120-240	9	45	800	400	500	300	286	10	11.1	70
5				19	75	860	430	510	340		30	33.3	92
10	30000/ 17321			36	120	965	450	515	330		28.8	32	135
15	20000/ 11547			50	195	1015	480	545	360		37	41.1	155
25	13800/ 7967		240-480	80	290	1015	500	570	380		45	50	185
37.5			250-500	105	360	1075	580	650	460		58	64.4	265
50	13200/ 7620		or others	135	500	1175	580	650	460		69	76.7	300
75	12000/ 6930		others	190	650	1175	761	706	496	591	102.6	114	380
100				210	850	1280	934	754	524		108.0	120	460
167	11000/ 6350			350	1410	1460	830	890	660		138	153.3	680
250	or			500	2000	1570	960	950	660		250	277.8	990
333	others			650	2500	1660	960	960	660		300	333.3	1160

TECHNICAL PARAMETERS

---75-167kva---



Technical Data for DH15 Series Single-Phase Pole-Mounted Distribution Transformer(Amorphous Metal Core)

Rating (KVA)	H.V(V)	Tapping Range (%)	L.V(V)	Loss(W)		Dimension(mm)					Weight(kg)		
				No Load Loss	Full Load Loss	A	B	C	D	E	Oil Weight	Oil Content	Total Weight
3	33000/ 19000	$\pm 2 \times 2.5\%$ or others	120-240 240-480 250-500 or others	8	45	800	400	400	300	286	10	11.1	60
5	30000/ 17321			8	75	840	400	480	310		35	38.9	75
10	20000/ 11547			12	120	955	500	565	380		35	38.9	155
15	13800/ 7967			15	195	975	500	565	380		37	41.1	160
25	13200/ 7620			18	290	1025	530	600	410		45	50	210
37.5	12000/ 6930			30	360	1075	580	650	460		54	60	305
50	11000/ 6350			32	500	1075	680	750	560	591	89	98.9	375
75	or			45	650	1215	730	820	610		123	136.7	545
100	others			50	850	1175	875	840	610		108	120	585
167				65	1410	1470	940	840	610		140	155.6	650
250				90	2000	1560	1260	960	660		250	277.8	950
333				120	2500	1660	1260	960	660		300	333.3	1200

TECHNICAL PARAMETERS



Technical Data for D11 Series Big Capacity Single-Phase Pole-Mounted Distribution Transformer(CRGO Core)

Rating (KVA)	H.V(V)	Tapping Range (%)	L.V(V)	Loss(W)		Dimension(mm)			Weight(kg)	
				No Load Loss	Full Load Loss	L	W	H	Oil Weight	Total Weight
100	13200/ 7620	$\pm 2 \times 2.5\%$	120/240/480	210	850	1020	770	1260	94	530
167	or		or	350	1410	1290	870	1265	138	680
250	11000/ 6350	or	120-240	500	2000	1460	1080	1380	250	990
333		0	240-480	650	2500	1570	1230	1395	300	1160



Technical Data for D11 Series 30kv-33kv Single-Phase Pole-Mounted Distribution Transformer

Rating (KVA)	H.V(V)	Tapping Range (%)	L.V(V)	Loss(W)		Dimension(mm)			Weight(kg)	
				No Load Loss	Full Load Loss	L	W	H	Oil Weight	Total Weight
10	33000/ 19000	±2×2.5%	120-240	47	165	590	510	1000	51	160
15				58	285	605	600	1030	63	208
25				66	448	620	700	1090	82	260
37.5	30000/ 17320	or	240-480	88	574	650	730	1195	97	325
50			or	110	700	680	760	1300	115	390
75	20000/ 11547	others	others	175	910	730	840	1340	140	460
100				215	1300	870	920	1350	170	550
167				308	1830	970	1240	1390	195	650
250				608	2900	1200	1420	1650	250	850

OUR FACTORY

CUSTOMER-ORIENTED CREATE VALUE FOR CUSTOMERS MAKEFRIENDS ALL OVER THE WORLD



▲ FACTORY DISPLAY



▲ FACTORY DISPLAY

Operating from a 50,000 sqm state-of-the-art manufacturing plant, we deliver a monthly production capacity of 2,000 single-phase transformers. Full compliance with international market access standards has been certified by accredited bodies, including ISO 9001 (Quality Management), ISO 14001 (Environmental Management), SA8000 (Social Accountability), and BSCI (Business Social Compliance Initiative).

SMART ELECTRIC GLOBAL SERVICE PROVIDER,MAKE LIFE BETTER



▲ DISPLAY AREA OF SINGLE-PHASE TRANSFORMER FINISHED PRODUCTS

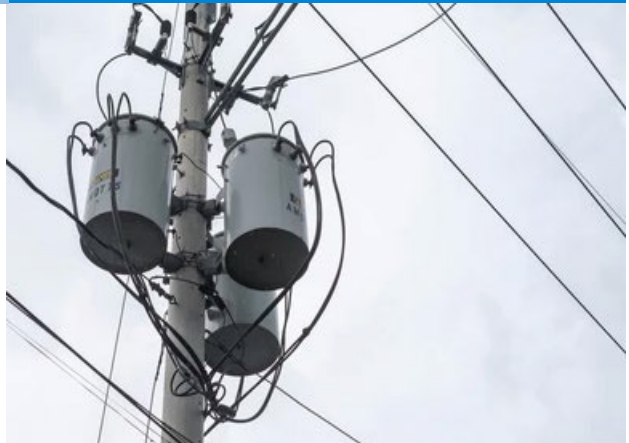
We remain unwavering in our commitment to delivering superior-quality single-phase transformers for global customers, driving energy efficiency revolutions through cutting-edge innovation to forge a trusted energy solutions brand.



Case show

make life better

Single-Phase overhead transformer is usually used for urban and rural power distribution

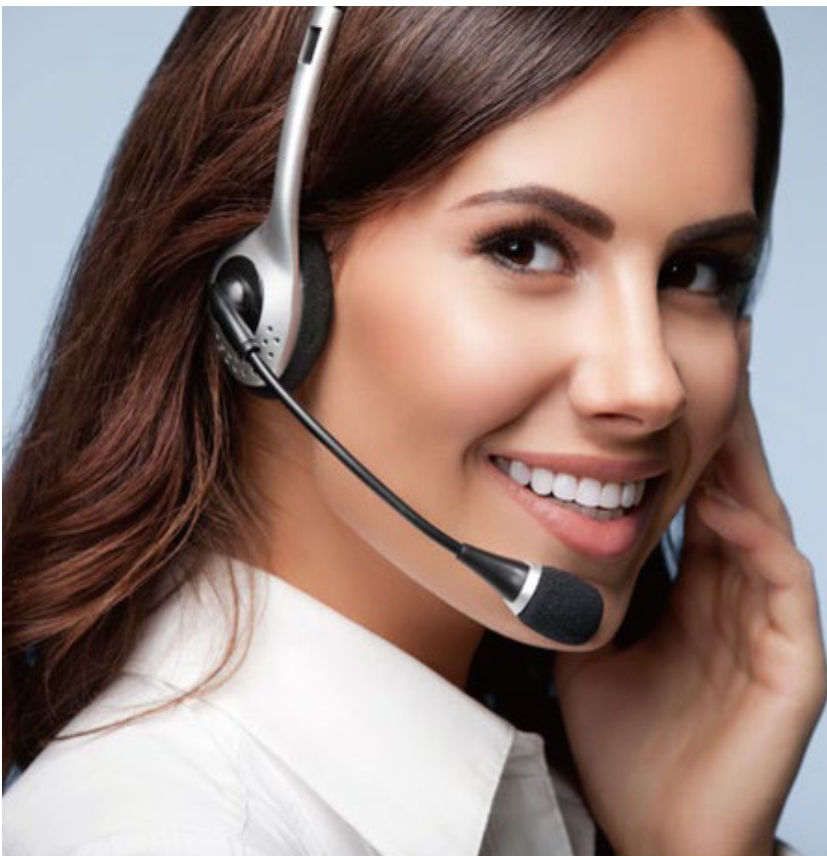


PRE-SALE SERVICE:

1. ISO certified excellent Manufacturer
2. Third-party authoritative certifications: CE, CB, UL, CSA etc
3. Flexible payment: T/T, LC,
4. Sufficient inventory, fast delivery time and long validity of the price
5. The whole process of picture tracking can be realized in production and transportation
6. Experienced professional sales team and a strong technical team
7. Sincerely invite customers to visit the company for guidance

AFTER-SALES SERVICE:

1. If there is any quality problem after receiving the goods, you can return the goods free of charge or ship new products
2. We provide our customers with a 1-year product warranty
3. Provide 24-hour, 365-day technical guidance worldwide
4. The VIP customers enjoy our promotional activity
trained by management consultants, is able to provide professional solutions for customers.
4. Our technical team is ready for 24-hour technical support worldwide.
5. Our customer service team ensures on time delivery.



Call Us For Details



SMART ELECTRIC GLOBAL SERVICE PROVIDER,MAKE LIFE BETTER

JIANGSU LIHE ELECTRICAL EQUIPMENT CO., LTD

Tel: +86-4000-222-091

Email: info@jslhtf.com

Website: <https://www.jslhtf.com>

Address: No. 22, Jinshajiang West Road, Economic Development Zone, Si Hong County, Suqian City, Jiangsu Province